

Combi Oven Full Touch Electric & Gas – 6 Trays

DCMFE6 – DCMFG6

THE SMART INNOVATION

Prime Cooking System : high quality performance and repeatability

Smart Upgrade Pack: complete flexibility. Dexion Full Touch is the first combi completely upgradable

Smart Wash System: perfect washing results, by saving time and money

Smart Interface: intuitive display with handy icons

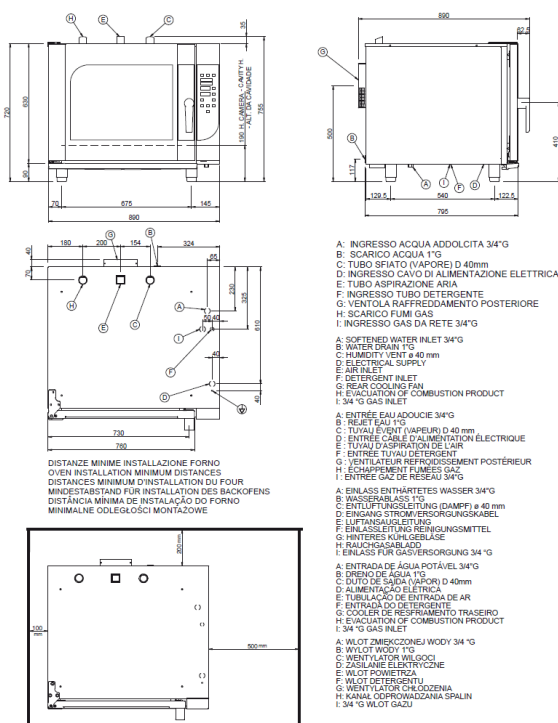
Smart service solutions: reduced installation and maintenance time

FEATURES

- * Multifunctional combi oven with sensitive touch Multilanguage display
- * 6 fan speeds and automatic fan inversion
- * 70mm pitch between the trays
- * Automatic cooling and preheating
- * Space for 100 recipes
- * Vent valve automatic control
- * Adaptable to 60x40 trays
- * New high power premix burner (DCMFG6)
- * USB standard
- * Cooking modes:
 - Convection from 40° to 250°C
 - Steam from 40° to 100°C
 - Combi from 40 to 100°C
 - Low temperature
 - Regeneration
 - Delta T
 - Multicooking
- * **Smart Upgrade Pack**
 - Automatic washing system
 - Active Humidity Control
 - Core probe internal and external (singlepoint, multipoint, sous vide)
- * **Service solutions**
 - Front access to the display electronic board
 - Self-explained error messages
 - Access of the 90% of the components from the right side panel
 - Parameters can be modified to give maximum personalisation
- * **Equipment**
 - AISI 304 cooking chamber with pressed top and bottom and rounded edges
 - Solid and ergonomic door handle
 - Door with double tempered glazing, openable
 - Door with stop positions
 - Adjustable door hinges
 - Height adjustable feet
 - IPX5



DCMFE6 /DCMFG6



DIMENSIONS (mm)

External
Cavity

Height 720; Width 890; Depth 795
Height 490; Width 630; Depth 440

CAPACITIES

GN 1/1 or 60x40
Space between levels (mm)

6
70

WEIGHT (kg)

120 (CMFE6) – 140 (CMFG6)

CLEARANCES

Back : 20 cm; Right: 50 cm

TEMPERATURE RANGE

40° to 250° C

GAS

Type
G30/31
G20
G25

12.5 kW

Consumption

0.98 kg/h
1.32 m³/h
1.53 m³/h

ELECTRICITY (380/415V – 3N – 50/60HZ)

Power (kW)
A/F

9.5
13

WATER

Pressure (Min / Max)
Hardness
Water quality
Conductivity

Water inlet : 3/4"
200/400 kPa (2/4 bar)
Softened max 7°TH (5°e, 4°h, 70ppm)
Chloride Cl⁻: 100 mg/l max. / Chlorine Cl₂: 0.2mg/l max.
Min 20 µS/cm